



Hale Kipa | 2017 | Annual Report



Where we go  
from here?

### **Board of Directors**

Luke W.T. Yeh, Chair

Scott W.H. Seu, Vice Chair

Zachary A. McNish, Second Vice Chair

Gregory J. Sitar, Treasurer

Susan Y.M. Utsugi, Secretary

Heidi A. Cregor

Chris Deuchar

Lanson Kupau

Michael Magaoay

Karen Miller

Jean Odo

Richard J. Sakoda

Zadoc W. Brown, Jr., Neighbor Island Liaison

### **Executive Staff**

Punky Pletan-Cross, Chief Executive Officer

Jaque Kelley-Uyeoka, Deputy Chief Executive Officer

Laura Brucia Hamm, Chief Operating Officer

Dori Tyau, Director of Human Resources & Training

Cody Barretta, Controller

### **Campaign Cabinet**

Chris Benjamin, Chair

Pip White

Richard Reese

Punky Pletan-Cross, Hale Kipa CEO

Luke W.T. Yeh, Hale Kipa Board Chair

Scott W.H. Seu, Hale Kipa Vice Chair

Zachary A. McNish, Hale Kipa 2nd Vice Chair

In our work with youth, we stress that in order to reach their goals, they need to persevere. That means keeping the end in sight, dealing with setbacks, calling on reserves of strength, and reaching out for help when it's needed.

It's a message that we ourselves have had to rely on over the last four plus decades.

Today, Hale Kipa is a healthy agency with deep roots in the community. But over our 43-year history of providing social services in Hawai'i's, we've had our share of difficult times. In the past few years, the volatile nature of the economy and uncertain government commitment to the kinds of programs we and other agencies provide have made it a challenge to keep our eyes on the prize, so to speak. We have had to call on our own reserves to keep moving forward.

Our perseverance has paid off, as we knew it would, in very concrete ways. We are about to break ground for our new Weinberg Campus, a project that has been in process since we purchased a prime parcel of land on Old Fort Weaver Road in 2006. The Campus will bring together many of the agency's functions, including two brand new shelters and a multi-purpose service center, and promises to solidify our ability to serve Hawai'i's youth for decades to come.

## HANGING IN



“It always seems impossible until it’s done.”

- Nelson Mandela



## Punky Pletan-Cross

*President and Chief Executive Officer*



As it has a habit of doing, the landscape of social services is shifting once again — but now in ways that are increasingly difficult to predict. This uncertainty requires tremendous nimbleness in just about every area of running an agency. Technology is changing the delivery of human services, and falling behind even a little bit is alarming. Hiring good people is more challenging than ever, now that spending a career with a single company looks like a sepia toned movie. Most alarming, those we serve are finding themselves falling farther and farther behind as the rate of change accelerates.

That's why its more important than ever to know where we've been... and where we want to be going.

There have been three distinct phases in the evolution of Hale Kipa. As the earliest days of the agency were somewhat disorganized, the first real phase began once Sam Cox was hired as the Executive Director in 1976 and the organization stabilized. During the 22 years of his tenure, Hale Kipa grew steadily in size and impact. When Sam retired in 1998, Hale Kipa was considered primarily a shelter provider with “enhanced services” including Independent Living, Kamala Foster Care, Youth Outreach (YO!), and the Transitional Living Program (TLP).

When I succeeded Sam in 1998, the agency began a dramatic expansion by becoming a major CAMHD (Child And Adolescent Mental Health Division) provider. That growth helped us to achieve our accreditation, but ultimately slowed as the CAMHD contracts ended. After the closing of the last of our CAMHD residential programs in 2011, Hale Kipa found itself primarily an outreach case management agency while still providing therapeutic foster care and shelter. We renewed our commitment to our core competencies: strength based, trauma informed and relationship driven. It's how we work with youth, and how we've thrived as an organization.

That second phase of our history is coming to a close as I approach the 20th year of my own tenure as CEO. While programs have come and gone over the years, the organization is about to go through its most significant shift. It will mark the end of our work to brand the organization, and to develop an agency-wide culture that will attract the best and brightest of our local talent pool. We will be looking for the kinds of young people that, even after learning in top universities around the world, will come back to apply the best practices they've learned to help our community.

The next phase will see our most significant change — our move to the new campus in Ewa. In our new home we can develop a sense of place in a community where we are committed to developing connections to the neighborhood, to other service providers, to the University of Hawaii West Oahu, and to becoming a “good neighbor.” It's the natural progression in our rich history.

# RIDING THE WAVE

When social service organizations face uncertain times, there are two levels of change to consider. On the one hand, there must be organizational changes to adapt to the new reality: budget, scale, hiring, and funding. On the other hand, major changes may require rethinking the programs themselves, both in terms of scale and, sometimes, their very existence.

In the past 20 years, Hale Kipa has done well in evolving with the times on both fronts. We are more integrated than ever, with a greater coherence between our culture and our programs. That promises to evolve even further after the move to the Weinberg Campus.

Programmatically, it has been a rockier road. In recent history, Hale Kipa had five emergency shelters. Now the agency operates three. While that represents a certain downsizing, it shows perseverance: at one point we were on the verge of closing all of our shelter services because of financial challenges. Today, our shelter programming has reemerged at the core of the agency's identity as a "House of Friendliness."

Another core of the organization is the Independent Living/Imua Kakou Program, a resiliency skill-based program for older youth. The ILP model has come into its own, supported by research on adolescent brain development and the role of long term support. It's the best way to assist youth with histories of trauma and disruptive family life to become successful as adults.

Hale Kipa's street outreach program YO! has always been a challenge due to the very nature of its work with street-identified youth in urban Honolulu and Waikiki. The program is more relevant than ever with teen homelessness on the rise, and significant effort is being funneled to communicate its value to the community.

## A SEA CHANGE

As Hale Kipa undergoes its most significant evolution in decades, we find we're not alone. In fact, there are a number of transitions happening in Hawaii's social services community. Several CEOs are retiring including Howard Garval at Child and Family Services, Jerry Rauckhorst at Catholic Charities, and Paulette Bethel at Family Programs. Ron Higashi, CEO of Susannah Wesley has also announced his retirement within the next year.



Working with the Hawai'i Department of Education and Family Court, Hale Kipa opened a school attendance support program on Kauai. Keeping youth in school serves the dual purpose of getting them educated, and giving them purposeful use of their time.

### THE LATEST SCOURGE

All over the country, especially in locales close to borders and points of entry, officials are seeing an alarming rise in human trafficking and commercial sexual exploitation. In response, Hale Kipa has partnered with PACT (Parents and Children Together) and the Susannah Wesley Community Center to respond to the problem. We have opened a new assessment center for trafficked victims as an addition to our shelter service continuum. It turns out that the agency's depth is well suited to respond to this current crisis, perhaps more so than agencies new to the business... or new to Hawai'i.

### FUTURE CHALLENGES

As challenging as the last phase of our history has been, the future is likely to be tougher. With the current focus on funding for the employer retirement system, public sector union pay raises, and fixed rail, Hawai'i's lawmakers are unlikely to commit to new services in youth services.

That means that youth who have come so far in dealing with their emotional and behavioral challenges will not have an easy time as young adults. There is a dearth of living wage jobs. Affordable housing is increasing rare, in spite of a skyline full of cranes, and single young adults will have a tough time finding a safe and clean place to live. Help will also be harder to find. Several agencies are in danger of closing their doors as contracts for children's mental health services are canceled. There will be wide gaps in services that youth will inevitably fall through. Some will wind up in Hale Kipa shelters, or wandering in and out of YO! Rarely will they receive the higher level of services that could make or break their future.

If ever there was a time for perseverance, both for Hawai'i's youth and for Hale Kipa, it is now.

With that will come a new generation of leadership, best represented by Ryan Kusumoto who succeeded Ruthann Quitiquit place at PACT (Parents And Children Together). They will bring a new sensibility to their work, having grown up in an age where reliance on technology and the awesome rate of change are givens. These CEOs may have a different skill set, and may be more inclined to make their mark in a much shorter time frames. In Hawaii, where relationships are fundamental to how organizations collaborate or compete, the landscape will be more fluid than ever.

# BRANDY

Sometimes, when we talk to Hale Kipa alumni, we ask them to tell us what they'd say if they had a chance to talk to Hawai'i's lawmakers, what legislators should know about the challenges Hawai'i's youth face every day.

"Oh, I did that," said Brandy in a recent interview. "I went to Washington with the National Foster Youth Institute and spent the afternoon with Representative Tulsi Gabbard. I told her, 'If you could fund only one program it should be Hale Kipa. Without them I wouldn't be here in your office. I wouldn't be alive.'"

That's the kind of person Brandy is.

The kind of person that has persevered through several foster homes, starting at age 13. Who fought drug and alcohol addiction and won. Who, with Hale Kipa's help, just got her first apartment on her own, and is sharing it with her younger brother whom she watches out for.

Brandy persevered, but she didn't have to do it alone. She credits Hale Kipa with being there for her all the way.

It was in her first foster placement that her social worker put in request for a Hale Kipa case manager. "My foster sister was actually a family friend. Her case manager was already a supervisor — Michelle Kinimaka — who had been at Hale Kipa for 20 years. I told her, 'If I don't get you I don't want to be in the program.'"

Brandy says she was just kidding, but Michelle wasn't taking any chances. She took the



assignment. The two became close — so close that when Michelle heard about an opening at the Hina Mauka treatment center, she personally took Brandy there, and visited her every few days.

Brandy knows she isn't out of the woods. She's got a place to live and a steady job. She has plans to get her degree in social work so she can help other youth by calling on her own life experiences. She is hopeful for the future.

But if Brandy has learned anything, it's that life takes perseverance... and that perseverance pays.



# BRIAN

When it comes to Brian's personal progress, his case worker Brad, his mom, the Family Court judge, and his high school counselors all agree: Brian has come a long, long way. To hear him tell it, Brian says the same about himself.

Things weren't so hopeful just a year and a half ago. Brian had dropped out of school, was heavy into drugs, and had a major anger problem. Then he was arrested for assaulting his mom. He was 16 years old.

It is at this point that lives are changed. Without a friendly hand, Brian would likely have gotten swept up by the system. Detention, out-of-home placements, more anger, less hope. It's the path on which many tragic lives start out. But with the encouragement and the right resources, another path can be taken, and tragedy averted.

Thanks to Hale Kipa's cooperation with Family Court, Brian met up with Brad from Hale Kipa's Ka'i Like, a core program that reaches into the juvenile justice system to support and strengthen youth before bad behaviors turn into hard habits. As it has for so many young people, Ka'i Like put together a plan to give Brian a fighting chance to succeed.

That plan involved a return to school, anger management classes, drug counseling — all brought to center around Brian's unique situation and needs. By acting quickly and firmly, Brad helped Brian pull out of a tailspin.

Of course, none of it would be possible without the strength and determination of Brian himself. "I had to do what I was supposed to do. I didn't like

it at first because I didn't like following all these rules. But then I started to see results. I realized everything Brad was telling me was to help me."

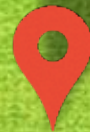
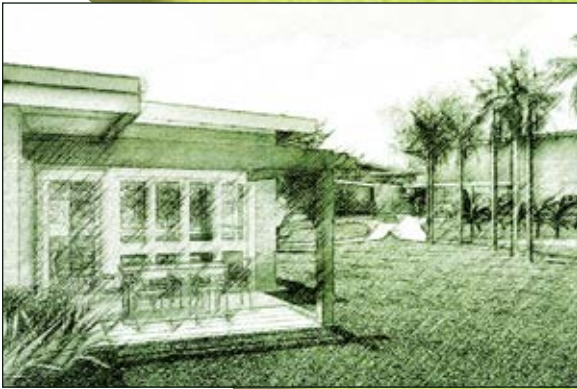
Here's where Brian stands now: He's off drugs. He's got a month left of probation. He's getting along well with his mom. ("We still argue. But now we talk it out.") And he's just graduated C-base, Adult Friends for Youth's alternative ed program, with a high school diploma.

"They tell you stuff you need to know. Not like the schools. How to get a job, save money... life skills."

Brian doesn't know exactly where he's going from here. What 17 year old does? He's considering the military, or learning a trade. He does know where he's not going — to that place of anger and desperation he left behind.



The Weinberg Campus  
will change the way  
we do business.



# OUR NEW NEIGHBORHOOD

Almost 14 years after we launched the capital campaign for our new home, the new Weinberg Campus is ready to break ground. For everyone at Hale Kipa — and in the social services community that we have been an integral part of for the last 4 decades — that reality is beginning to sink in. There are about to be dramatic changes in how we do business and how we are perceived.

On a practical level, Hale Kipa will be leaving its Pi'ikoi Street offices in urban Honolulu, as well as space in a Waipahu office building. Our agency administrative staff and much of our Oahu program staff will move to the new Service Center in Ewa.

The Weinberg Campus will also include two new shelters. For one thing, now that they are on our own land, they will be essentially nimby-proof and save the agency the stress of dealing with unhappy neighbors. More importantly, these state-of-the-art facilities will provide quality services in a controlled “trauma informed” environment. Staff will have the ability to supervise and work closely with youth, encouraging their aspirations for a higher living standard for their future.

The upcoming move signals a shift in Hale Kipa’s corporate culture as well. When the administration staff — the people in HR, accounting & finance, IT, QI, development and management — share a building with the Program Coordinators and our Outreach staff, great things are bound to happen. It will be the first time many of the office staff will be routinely in contact with those that we actually serve. It is bound to make us a better agency. And while not all staff will have permanent space in the new facility, most will be there frequently. They’ll see first hand the range of work we do with clients, both in the shelter and those coming in for counseling, case management, and other services.

Finally, while Hale Kipa has always been a community-based organization, after 47 years there was no one community that we called home. That all changes with our permanent presence in West Oahu. In all, the move to the new Weinberg Campus will provide the punctuation to the end of an era for Hale Kipa — and the start of a new one.



# FINANCIAL STATEMENT

REVENUE and SUPPORT	2017	2016
Government Fees and Contracts (Note 1)	\$6,143,279	\$6,258,999
Contributions	3,954,389	1,062,630
Aloha United Way	177,461	172,686
Interest and Dividends (Note 2)	24,563	7,658
Net Realized and Unrealized Loss on Investments	(955)	(16,491)
Gain (Loss) on Sale of Property	--	(180)
Other Income	64,091	79,872
Net assets released from restrictions (Note 3)	--	--
<b>Total Revenue and Support</b>	<b>10,362,828</b>	<b>7,565,174</b>
<b>EXPENSES (Note 1)</b>		
Program Services	5,908,022	6,148,867
Management and General	1,310,654	1,210,899
Fundraising	57,949	58,618
<b>Total Expenses</b>	<b>7,276,625</b>	<b>7,418,384</b>
<b>CHANGE IN NET ASSETS</b>	<b>3,086,203</b>	<b>146,790</b>
<b>NET ASSETS AT BEGINNING OF YEAR</b>	<b>3,632,783</b>	<b>3,485,993</b>
<b>NET ASSETS AT END OF YEAR</b>	<b>\$ 6,718,986</b>	<b>\$3,632,783</b>

Note 1 — Hale Kipa receives funding from the Hawaii Department of Human Services Benefit, Employment & Support Services Division Homeless Programs Office for its State homeless shelter program. Hale Kipa received approximately 59% and 83% of its support and revenue from government contracts during the years ended June 30, 2017 and 2016, respectively. A significant reduction in the level of this support, without an increase in other sources of support and revenue, could have an adverse effect on Hale Kipa's programs and activities. The governmental agencies require the fulfillment of certain conditions as set forth in the contractual agreements, noncompliance of which could result in the return of funds to the government.

Note 2 — A \$200,000 endowment contribution from the Harry and Jeanette Weinberg Foundation (Foundation) is for the repairs and maintenance of various shelter and facilities. The contribution is deposited in a federally insured bank in the State of Hawaii as prescribed by the Foundation and may not be withdrawn without approval of the Foundation. The income and the appropriated expenditures from the endowment amounted to approximately \$1,500 for each of the years ended June 30, 2017 and 2016.

Note 3 — Temporary restricted net assets are released from donor restrictions primarily by incurring expense, which satisfy the restricted purposes or by the passage of time. Net assets of \$706,995 and \$120,183 in 2017, and 2016, respectively, were released from restrictions for program, administrative expenses and capital campaign expenditures.

Figures are excerpted from our audited financial statements.

A complete copy of the audited financial statement is available by writing or calling Hale Kipa, Inc.

# PAWS FOR A CAUSE



Sadly, our doggie day care/entrepreneurial initiative & youth training program closed last November. While the feedback from our clients had been overwhelmingly positive, we were not able to achieve enough financial stability to keep Paws open. Nonetheless, the comments about the staff and quality of care that the canine family members received were extremely heartening.

What's more, we took away lessons from this initiative regarding the impact a program like Paws can have on victims of trauma. The combination of working with dogs and with taking on the responsibility of running a real business was magic in helping our youth re-envision their futures. We are keeping our eyes open for another opportunity down the road to connect dogs with adolescents and young adults.

# LOOKING FOR A FEW GOOD PEOPLE

The non-profit sector in Hawai'i is facing a hiring crisis. That's because non-profits, facing shrinking state contracts, are having a hard time keeping up with overhead, much less pay competitive wages. Hale Kipa and others are competing with hundreds of local businesses for entry-level employees.

For our Masters' degree level positions, the problem is even more pressing. Prospects that might serve as care coordinators or therapists in Hale Kipa programs like Intensive In-Home Therapy, Multisystemic Therapy, or Functional Family Therapy are increasingly drawn to the higher wages paid by private practice.

The solution lies in communicating our value to the community. We must attract individuals for whom career decisions are based on the whole work experience as much as the paycheck. Hale Kipa's rich culture, commitment to helping youth, and respect for its employees will help attract the kind of people we need to move forward.



# CONTRIBUTORS & COLLABORATIONS

## **PARTNERS**

*(\$25,000 or more)*

Anonymous  
Aloha United Way  
Victoria S. & Bradley L. ;; Foundation  
Hau'oli Mau Loa Foundation  
McInerney Foundation

## **CHAMPIONS**

*(\$10,000 to \$24,999)*

Hawaii Hotel Industry Foundation  
Hawaii Justice Foundation / Bretzlaff Foundation  
Hawaiian Electric Company  
Marisla Fund of the Hawai'i Community Foundation  
The Rev. Takie Okumura Family Fund of the Hawai'i Community Foundation  
Keith & Judy Swayne Family Foundation  
Tai Up Yang Fund of the Hawai'i Community Foundation

## **BENEFACTORS**

*(\$5,000 to \$9,999)*

Anonymous  
Ewa Beach Community Fund of the Hawai'i Community Foundation  
Kauai United Way  
Annie Sinclair Knudsen Memorial Fund of the Hawaii Community Foundation  
NFL Foundation  
Eileen Sakai Fund of the Hawai'i Community Foundation  
The Harry & Jeanette Weinberg Foundation, Inc.

## **SUSTAINERS**

*(\$2,500 to \$4,999)*

William & Camilla Albert  
Carl & Hildgund Bucky Foundation  
Joseph Dwight IV  
Friends of Hawaii Charities, Inc.  
Rosalyn & Joseph Newman Foundation  
Scott Seu & Carrie Okinaga  
Robert & Georgia Roth

## **SUPPORTERS**

*(\$1,000 to \$2,499)*

An Anonymous Advisor  
Aiea United Methodist Church  
The Aloha Bears  
Rev. Bil & Anne Aulenbach  
BF Tile, Inc.  
Alexander Campbell  
Rick Ching  
City Mill Company, Ltd. / Chung Kun Ai Foundation

Community Church of Honolulu  
Masahaur & Mayumi Edamura  
Mark Gentry  
Galen & Lisa Haneda  
Harris United Methodist Church  
Honolulu United Honpa Hongwanji BWA  
Hope Chapel Waikiki  
Jaque Kelley-Uyeoka  
Thao Khamoui  
Helen MacNeil & Patrick McFadden  
Movie Museum  
Carrie Jeanne Oda  
Punky & Cris Pletan-Cross  
Servco Foundation  
Gregory Sitar  
Wah Duck & Grace K.S. Young Memorial Fund  
Jhamandas Watumull Fund  
Luke W.T. Yeh

## **CONTRIBUTORS**

*(\$500 to \$999)*

Associa Hawaii  
Laura Brucia Hamm  
Peter & Lee Carson  
Central Pacific Bank  
Heidi Cregor  
James Cribley  
Christian Fern  
Greg & Loretta Fogle  
Blanche Fountain  
Elena Fragas  
Jeannie Hedberg  
Charles Howland  
Kukui Children's Foundation  
Zachary McNish & Kina Mahi  
Karen Miller  
Roxanne Okazaki  
Plantation Coffee Company  
Heidi Rian  
Steve & Beata Saito  
Richard & Stephanie Sakoda  
David Silva  
St. Christopher's Episcopal Church  
St. Mark's Episcopal Church  
Lawrence Taff  
Taketa 'Ohana Fund of the Hawaii Community Foundation  
Dori & Reagan Tyau

## **DONORS**

*(\$250 to \$499)*

Anonymous  
Aaron Masuoka  
Anna O'Brien's  
Michael Broderick & Maile Meyer

BS McEwen  
Robert Carlson  
Murray & Linley Chapman  
Kathleen Chapman  
Clint & Suzy Churchill  
Vickie Farmer  
Sue Francis  
Heidi Jancek  
Andrew Keith  
Marisa Kent  
Gerry Labiste  
Marine Consulting LLC  
McKinley High School - Four 10 Two Company  
Prince of Peace Lutheran Church  
Paul & Deborah Schraff  
Craig Slayter  
Gayle Tasaka  
Waiokoala Congregational Church United Church of Christ  
Sherry Wang  
Susan Shieh Wright

## **FRIENDS**

*(up to \$249)*

Anonymous  
Marissa Adachi  
Amazon Smile Foundation  
Lori Apuna  
Carl Arakaki  
Cody & Candace Barretta  
James & Mary Ann Bell  
Milan Bertosa  
John & Susan Campbell  
Paul & Ricki Cassidy  
Geri Ching  
Philip & Gerry Ching  
Costco Wholesale Corporation  
Rev. Samuel Cox & Barbara Ripple  
Betty Cross-Fisher  
Daena Dempsey  
Doshisha University  
Glenn & Lynne Ebisui  
Dennis & Trinidad Echiverri  
David & Sharon Fairbanks  
Chelsea Fernandez  
Timothy Fern  
Hilary Ferris  
Alex Fontanilla  
Sondra Fram  
Daniel Gaudiano  
Marco Gregorio  
Iris Ha  
Eve Hamilton  
Hawaii Island United Way  
Kellie Heinz

Gwenette Higa  
 Aileen Hiramatsu  
 Anne Hyde  
 Carl & Lianne Iwanaga-Ohashi  
 Jade Painting, Inc.  
 Theresa Janowicz  
 Jesus Christ Ministries  
 Ray Kan  
 Andy Kastenberg  
 Jeslyn Kawabata  
 Elspeth Kerr  
 Gary & Ginny Kimata  
 Wendi Kamiya  
 Kekoa Kinimaka  
 Dustin Kaiser  
 James & Charmian Lyons  
 Mary MacKay  
 Kay Matsushige  
 Kenneth & Diane Matsuura  
 Heather McMillen  
 Douglas & Gale McNish  
 James Michel  
 Joey Miyamoto  
 Randolph Moore  
 Brandi Morgan  
 Pauline Chun Muniz  
 Paul & Gwen Murakami  
 Margaret Murchie  
 John Nahinu, Jr.  
 Lisa Nakamura  
 Sara Neves  
 Dean Nishizaki  
 No Forgive Action  
 Dillon O'Claray  
 Jean Odo  
 Terri Okada  
 Ann Omori  
 Steven Oppenheimer  
 Osaka Prefecture University  
 Andre Para  
 James Putt  
 Lehua Rabang  
 Gail Renard  
 Jan Ro  
 The Robbs Ohana  
 Michael Roberts  
 Peter Rosegg  
 Elizabeth Ruze  
 Ruey Ryburn  
 Jed Santos  
 Michael Schwartz  
 Katherine Seymour  
 Jay & Beverly Shintaku  
 Douglas Shirai  
 Sisters of the Sacred Hearts Infirmary  
 Gregory Traynor

Laurita Turner  
 Richard & Bobbie Ubersax  
 United Methodist Women - First United  
 Methodist Church  
 UnitedHealthcare  
 Marilyn Ushijima  
 Susan Utsugi  
 Kristen Vierra  
 David Robinson & Marcia Waldorf  
 Helen Walker  
 Robert Whittier  
 Wendy Wichman  
 Willie Williams  
 Contina Williams  
 Thomas Witten  
 Patricia Yogi  
 Darryl & Paula Yonezawa

**IN-KIND DONORS**

Alana  
 Alex Alexander  
 Larry Alfrey  
 The Aloha Bears  
 Alpha Delta Kappa Zeta Chapter  
 Anne Ambrocio  
 Associa Hawaii  
 Andre Auw  
 Au Family  
 Holly Baker  
 Central Union Church  
 Aloha Cerit  
 Chaminade University - Counseling Psychology Students  
 Dennis & Trinidad Echiverri  
 Everything Moves Sales  
 Exchange Club of Honolulu  
 Family Empowerment Center  
 Aileen Fong  
 Girl Scouts - Daisy Troop Hickam Air  
 Force Base  
 Donald Gloeb  
 Gytaku Japanese Restaurant  
 Marcia Hamilton  
 Sue Hanson Estate  
 Hawaii International Child  
 HawaiiUSA FCU  
 Jack Herron  
 Ho'Bah Clothing Company  
 Diane Honda  
 Hongwanji Mission School  
 Honolulu United Honpa Hongwanji BWA  
 Hospice Hawaii  
 James Howell  
 The Islander Group  
 Valerie Kawakami  
 Klevansky Piper, LLC

Terry Knight  
 Dennis & Jill Kondo  
 Gerry Labiste  
 Sally Lampson Kanehe  
 Catherine Lowenberg  
 Mills Uniform  
 Mind & Body Works, Inc.  
 Ailene Miyasato  
 Murphy's Bar & Grill  
 Brian Nakagawa  
 Arma Oana  
 Carrie Jeanne Oda  
 P&E Foods  
 Pacific Revival Center - Outreach Ministry  
 Rainbow Family 808  
 Victor Robles  
 Rotary Club of Honolulu  
 Sand Island Treatment Center  
 Sheraton Waikiki Hotel  
 St. Clements Episcopal Church  
 Matt Sweeny  
 Tiffany's Nails  
 Tiki's Bar & Grill  
 Tony Honda Friends  
 UnitedHealthcare Friends  
 Mari & Dale Vermeer  
 Diane Wennick  
 Lanod & Mary Westmoreland  
 Steven & Joni West  
 Dannah Yamamoto  
 Sharon Young  
 Zonta Club of Kauai

**LEGACY DONORS**

Delores Curtis  
 In Memory of Albert Dauth  
 In Memory of Hildagard Hurley  
 In Memory of Imogene Robbins  
 Gladys Yoshimura

**COLLABORATIONS**

Youth Outreach (YO!)  
 Hale Kipa, Waikiki Health  
 Kuku Center  
 Family Promise of Hawaii, Hawaii  
 Foster Youth Coalition, Hawaii Im-  
 migrant Justice Center of LASH, Hawaii  
 Literacy, Joyful Heart Foundation, Kids  
 Hurt Too, Learning Disabilities Associa-  
 tion of Hawaii, Mediation Center of the  
 Pacific, Ho'ala Na Pua, Hale Kipa  
 Trafficking Victim Assistance Program  
 (TVAP)  
 Susannah Wesley Community Center,  
 Parents and Children Together, Hale  
 Kipa



# Hale Kipa

615 Piʻikoi St., Suite 203  
Honolulu, Hawaiʻi 96814  
Info@HaleKipa.org  
www.HaleKipa.org



Aloha United Way  
Kauai United Way  
Hawaii Island United Way